



Nanning Yanhua Electronics Co.Ltd

Nanning Auto Service Co.Ltd

CKM200 Instruction

Version (V1.03)

March 2th,2010

Content

I Product Introduction	
1 Features	1
2 Applicable Vehicles	1
3 CKM200 Device	3
II Software Installation	4
III Activation ..	5
IV Payment	6
V Upgrade	7
VI Examples	11
1 BENZ series	11
2 BMW series	18
3 Programmer	23
VII Appendix	29
Appendix 1: The Ways of Identifying the Pin Order	29
Appendix 2: Chip Dismantling and Soldering	29

Important Statement:

This instruction is only available for reference for users. Nanning Auto Service Co., Ltd. reserves the right to change the product or product instruction without notice, reserves the right not to update this document to inform these changes.



I. Product Introduction

1. Features

- **For BMW & BENZ** and more vehicles in the coming future;
- **Multi-functions:** Integrate functions such as key information reading, data calculating, key writing, and is applicable to both old and new models.
- **Easy operation:** Graphical workflow will make it easy for your operation. What s more, our CKM200 can be operated via OBD socket, CAN or K line on many models without disassembly.
- **Innovative Payment Methods --- Pay as you go!**
- **High security of G3 platform:** CKM200 is based on our G3 (the third generation) platform which adopted IDEA (International Data Encryption Algorithm) for registration, upgrade and payment.

2. Applicable Vehicles

2.1 BENZ

Benz S CLASSW140 W220

Benz CL CLASSW215

Benz SL CLASSR230

Benz E CLASSW210, W211



Benz CLK CLASS W208, W209

Benz CLS CLASS (W219)

Benz C CLASS (W202, W203)

Benz ML CLASS (W163)

2.2BMW

Old BMW (EWS2.EWS3.EWS4)

BMW 1/3/5/6E87.E90.E91.E92.E60.E61.E63.E64series white shell CAS 2

BMW 1/3/5/6/XE87.E90.E91.E92.E60.E61.E63.E64.E70.E71series black
shell CAS 2

BMW 1/3/5/6/XE87.E90.E91.E92.E60.E61.E63.E64.E70.E71series black
shell CAS 3

BMW 7 series E66 CAS 2005- CAS 2



3. CKM200 Device

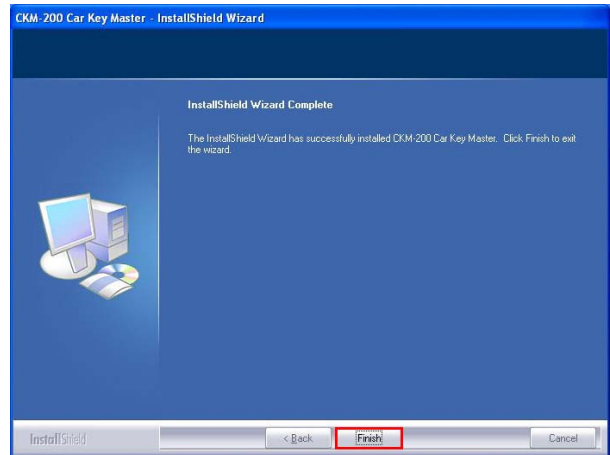
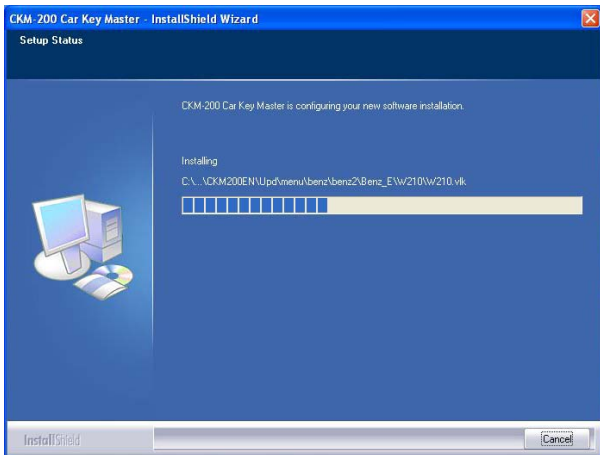
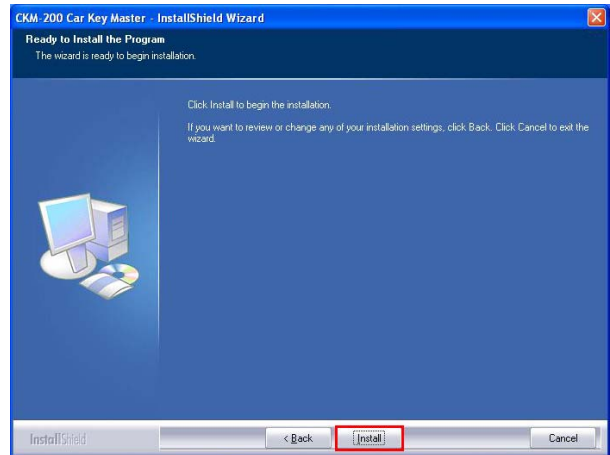
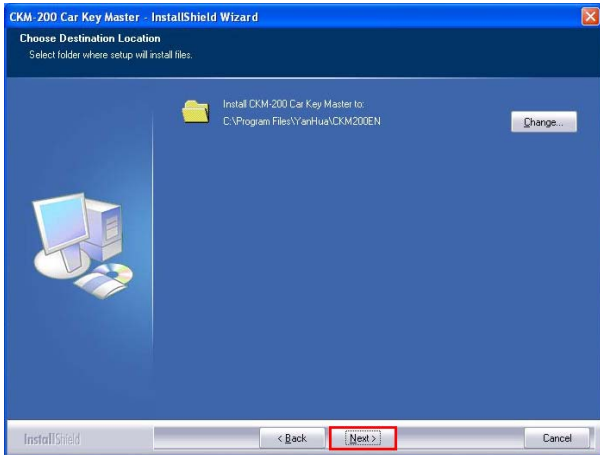
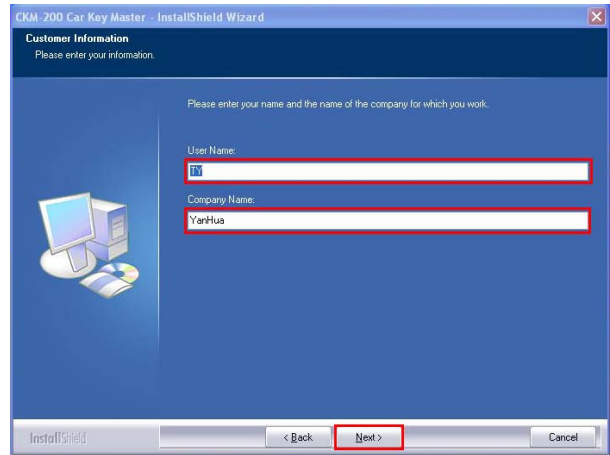
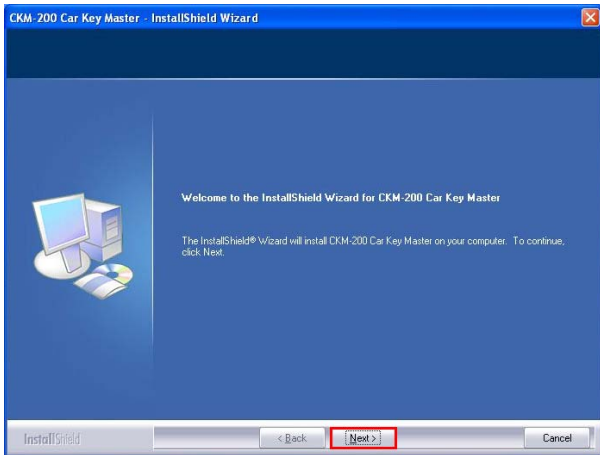




II Software Installation

Operation steps:

Double click to install “CKM 200-1.00-CN.exe”



You have completed the software installation ,and the computer desktop displays



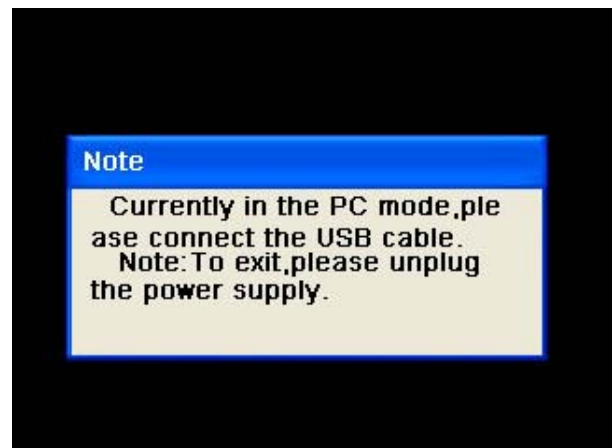
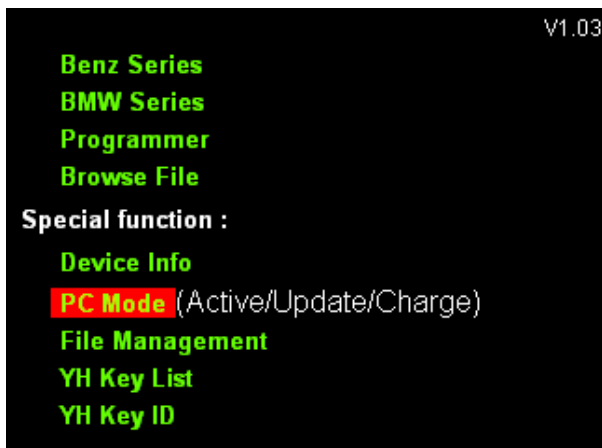
the icon.

III Activation

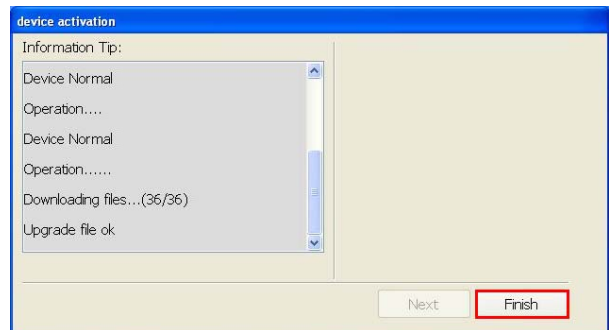
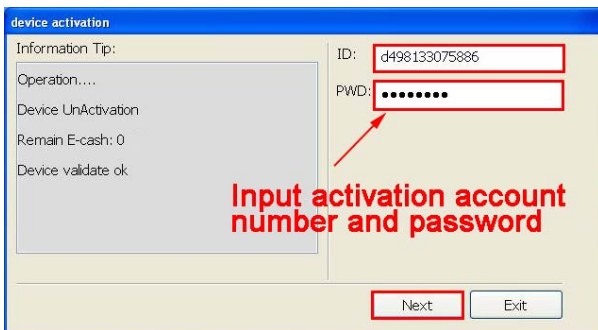
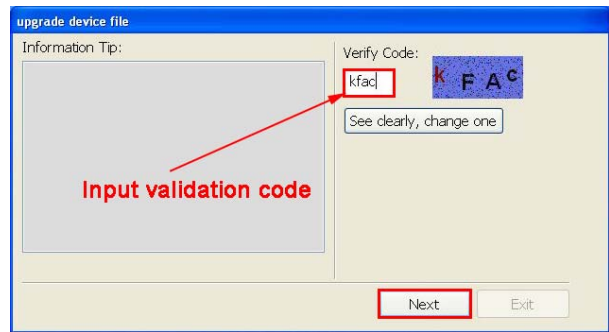
Note: Make sure the computer has been online before doing product activation operation.

Operation steps:

1. Connect device power;
2. Operate device manually, select the "PC mode", then the device connect computer with USB cable ;



3. Click to run CKM-200 Car Key Master; (Operate as the following figure)



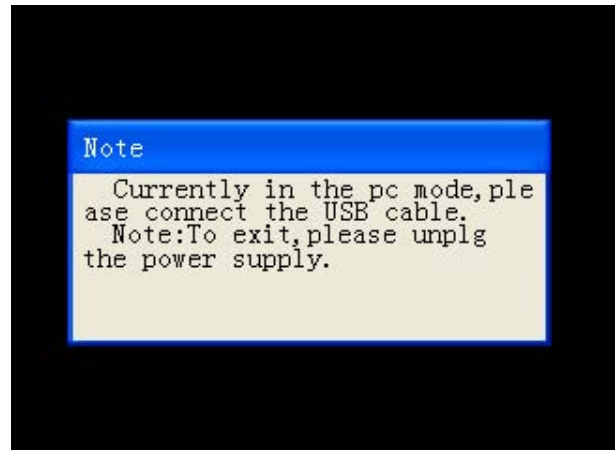
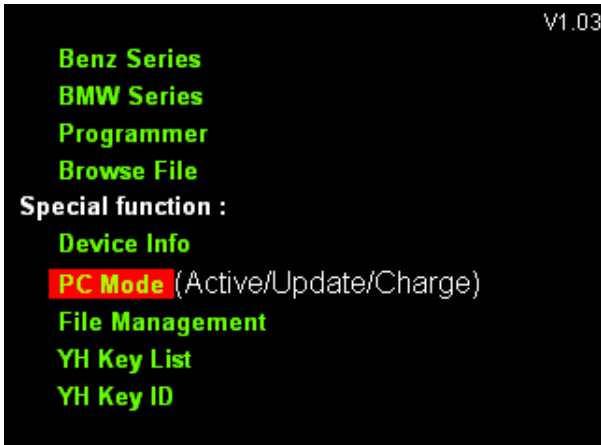
IV Payment

Function: input token card account to hardware device, ensure that the device can be used normally.

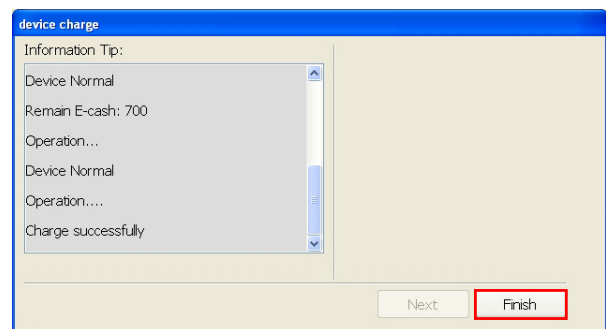
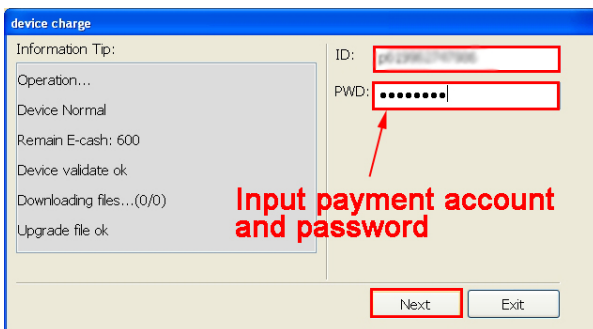
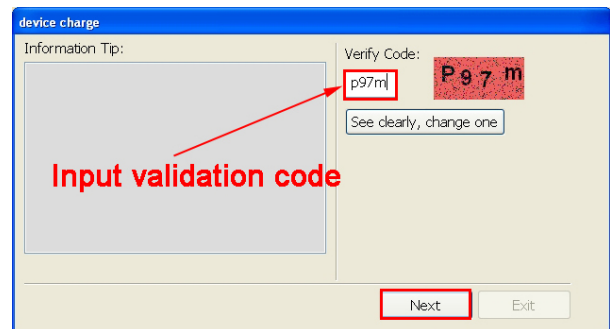
Note: Make sure the computer has been online before doing product payment operation.

Operation steps:

- 1.Connect device power;
- 2.Operate device manually, select the "PC mode", then the device connect computer with USB cable ;



3. Run Car Key Master(CKM 200.exe), click "Management" → "Payment", operate as the following figure



V Upgrade

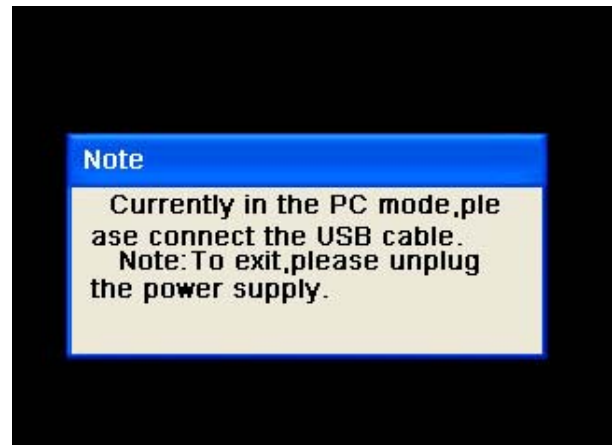
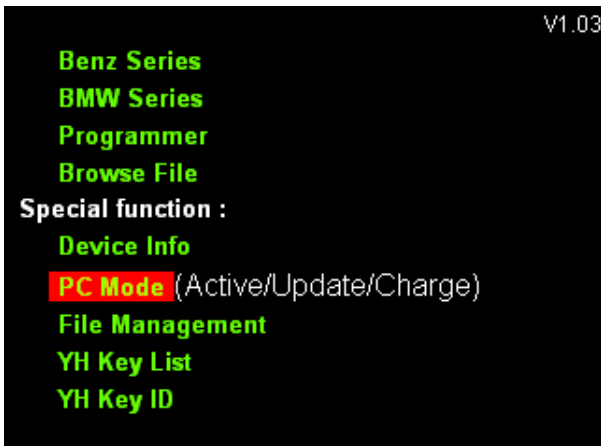
Product Upgrade

Function: Update the device operation interface and functionality

Note: Make sure the computer has been online before doing product upgrade operation.

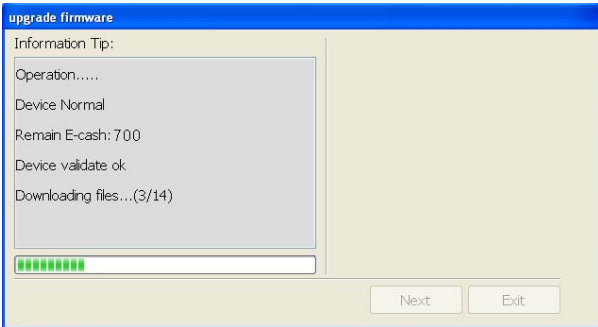
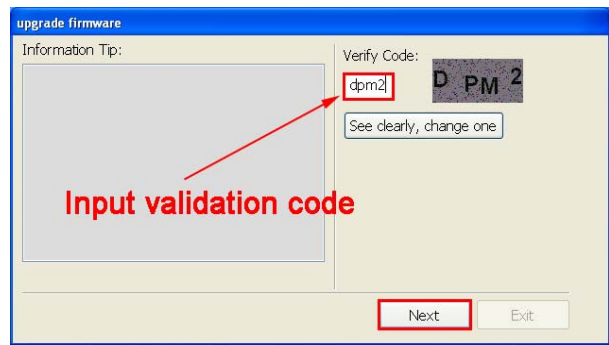
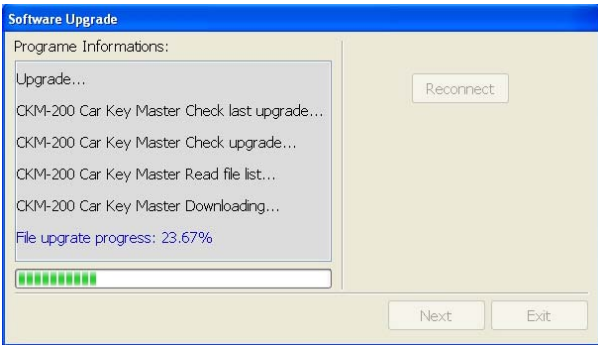
Operation steps:

1. Connect device power;
2. Operate device manually, select the "PC mode", then the device connect computer with USB cable ;

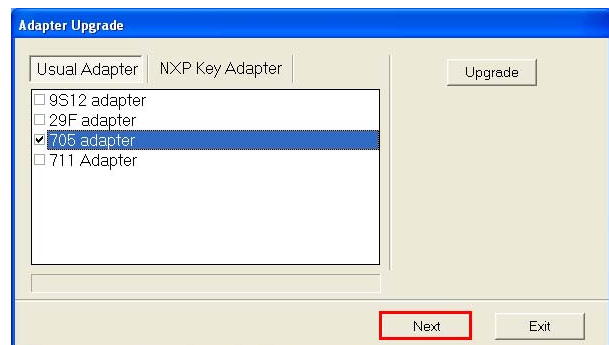
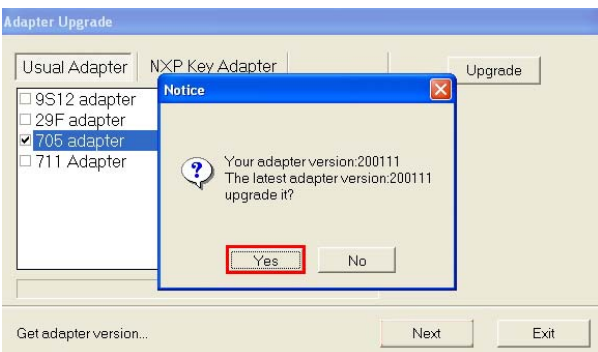
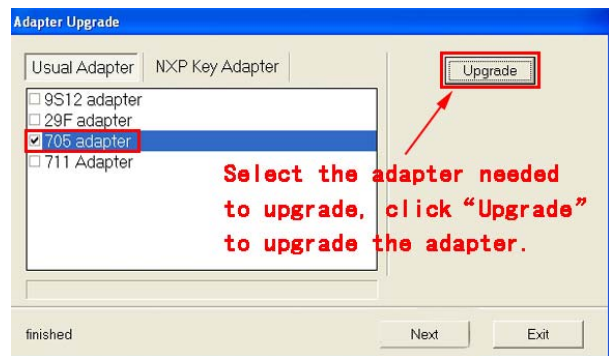
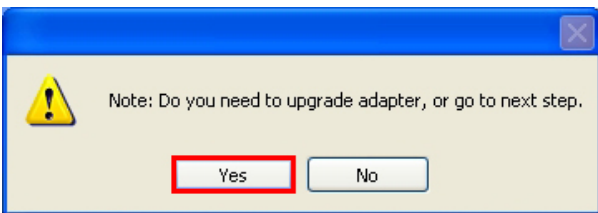


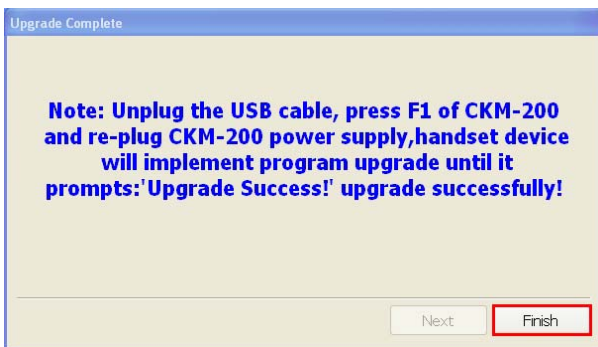
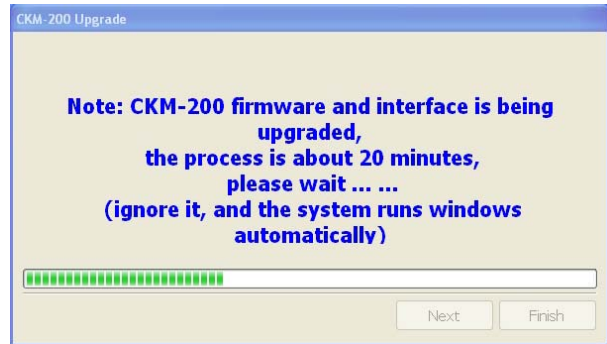
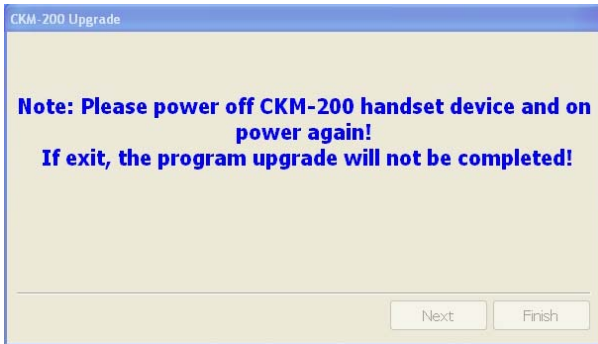
3. Run Car Key Master(CKM 200.exe), click "Management" → "Update" → "Product Update", operate as the following figure



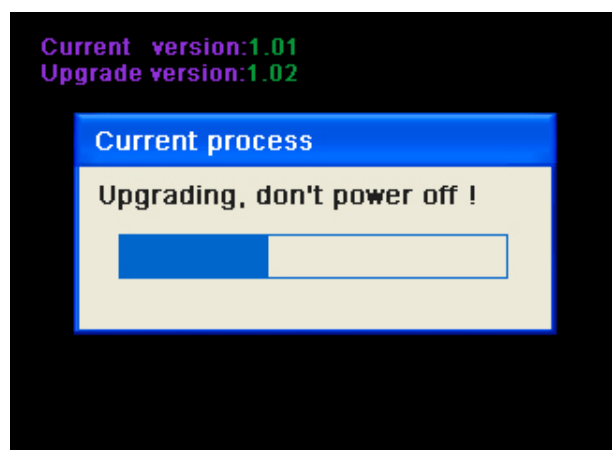
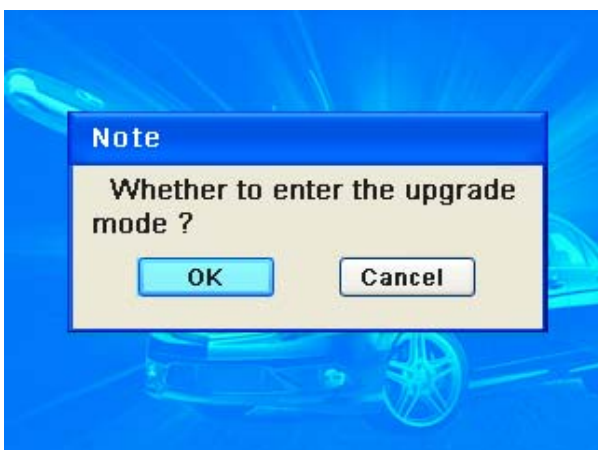


4. After the firmware upgrade completed there will pop up a dialog box and prompt whether you need to upgrade adapter, if yes, click "Yes" to upgrade adapter; If not, click "No" to cancel adapter upgrade.





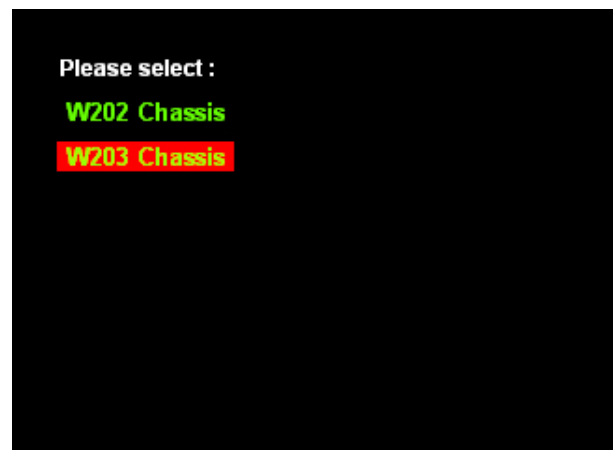
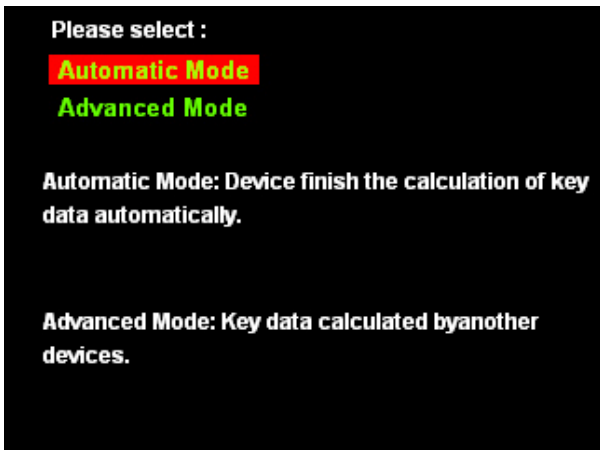
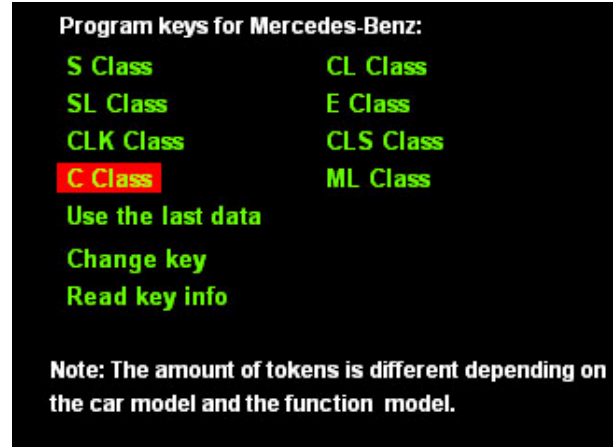
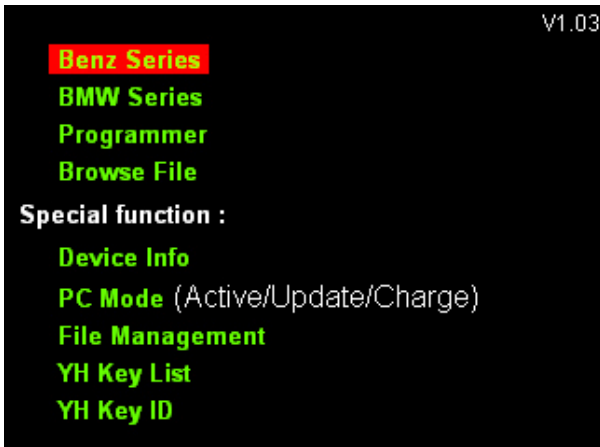
5. In the last step, it will prompt to upgrade device, you must first unplug the USB cable and device power line, press F1 of CKM-200, then plug device power line (please hold down F1 until plug the device power), handset device will upgrade procedure (in the device upgrade process, please do not off power supply) until the device prompts: "Upgrade Success!". This is a successful upgrading. As shown below:



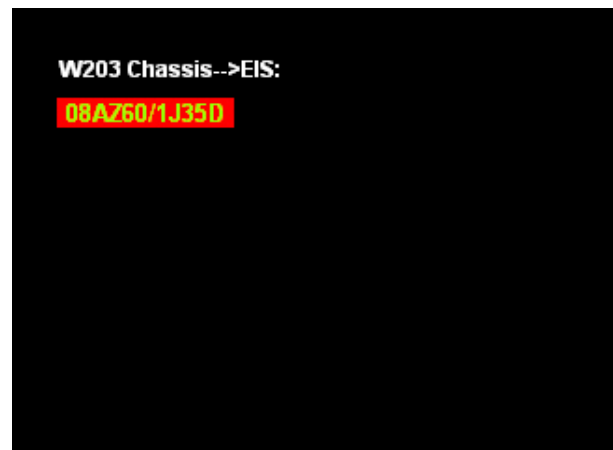
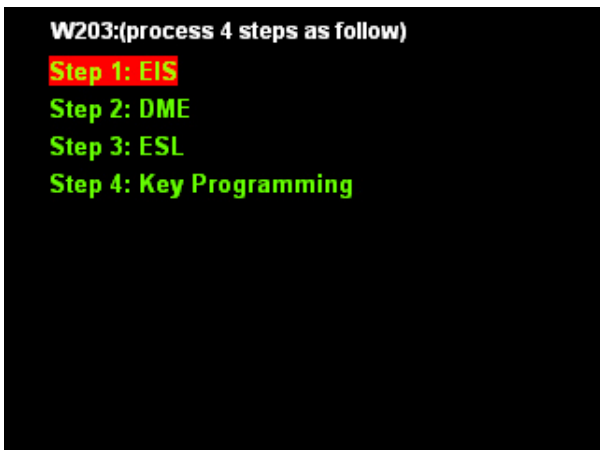


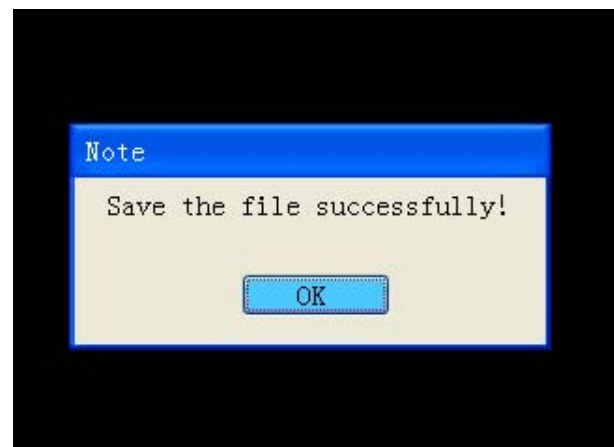
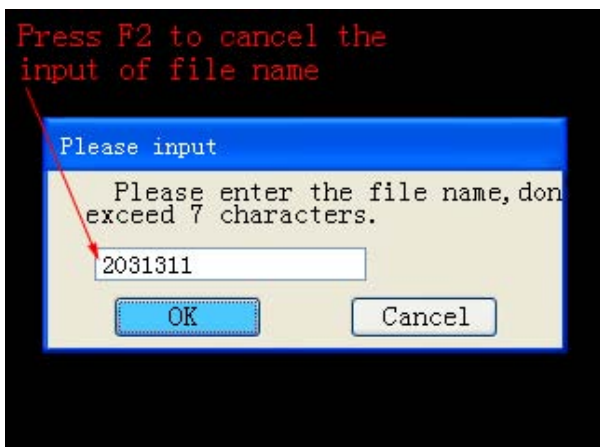
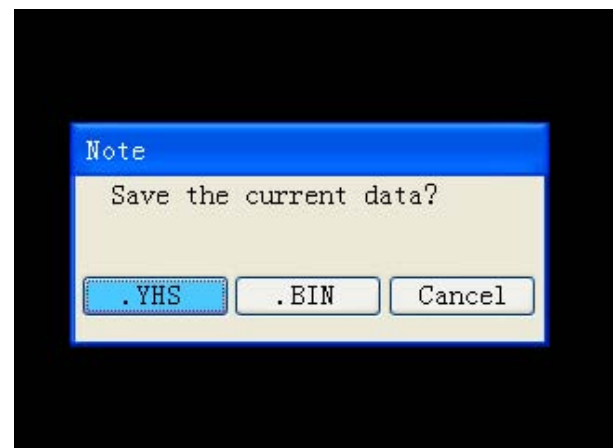
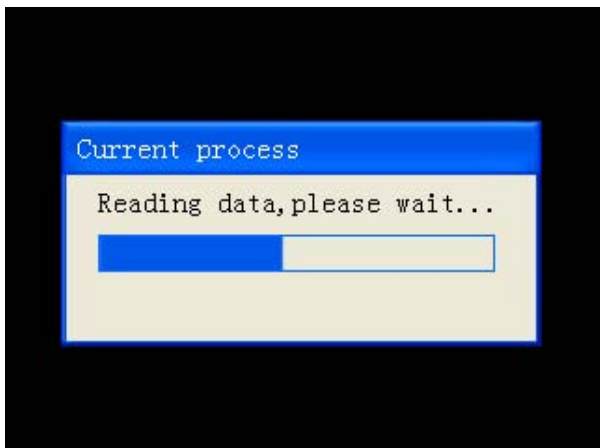
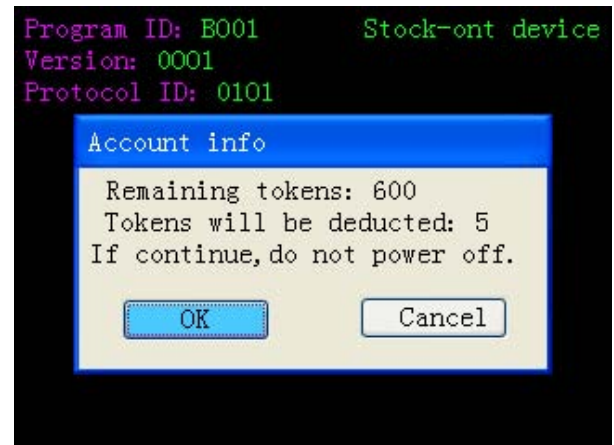
VI Examples

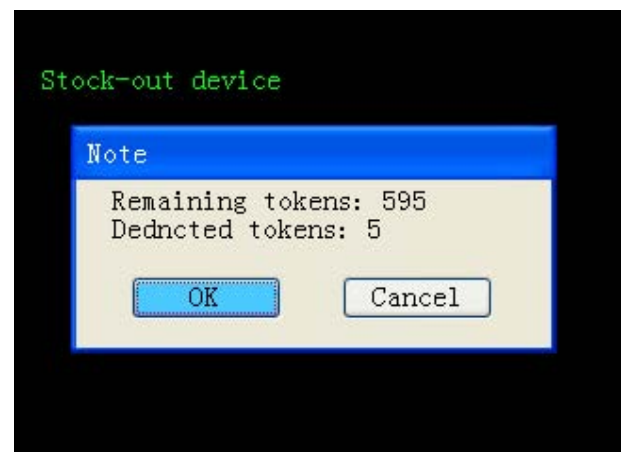
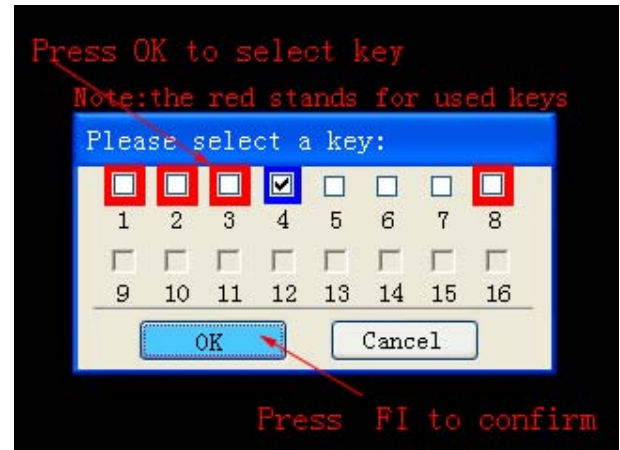
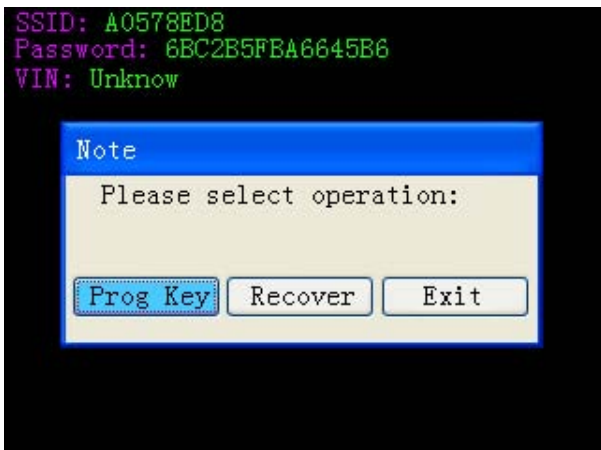
1. BENZ series(such as: C Class)



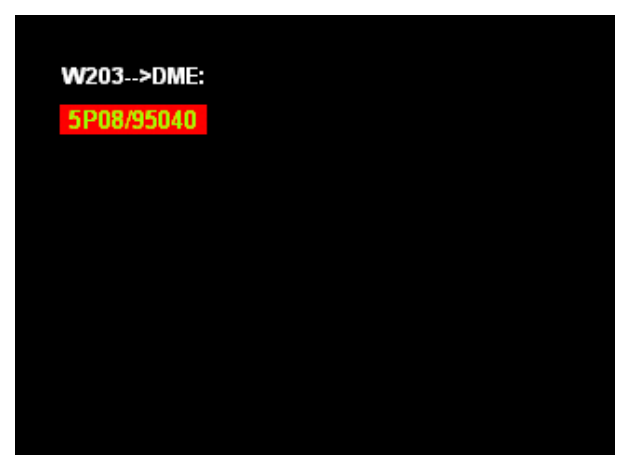
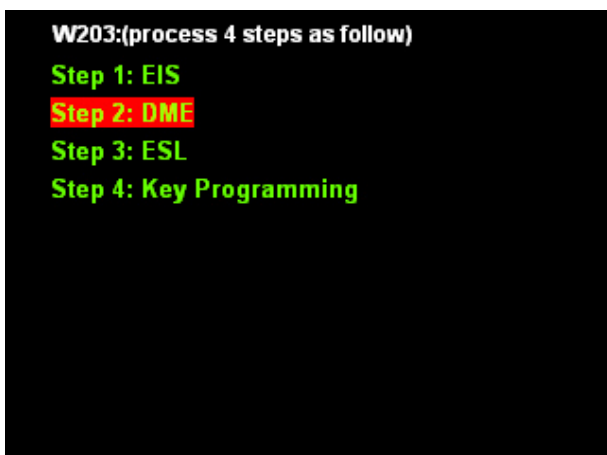
Step1: EIS

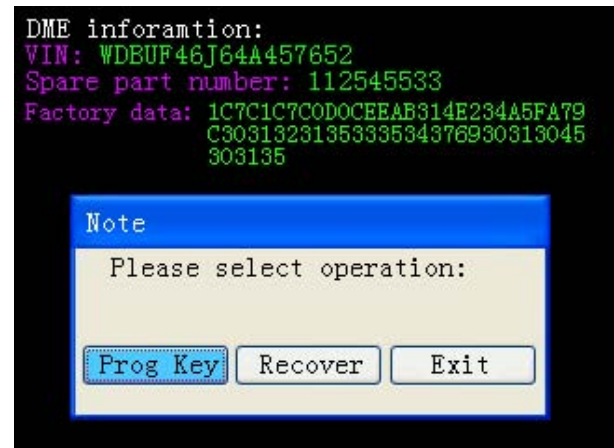
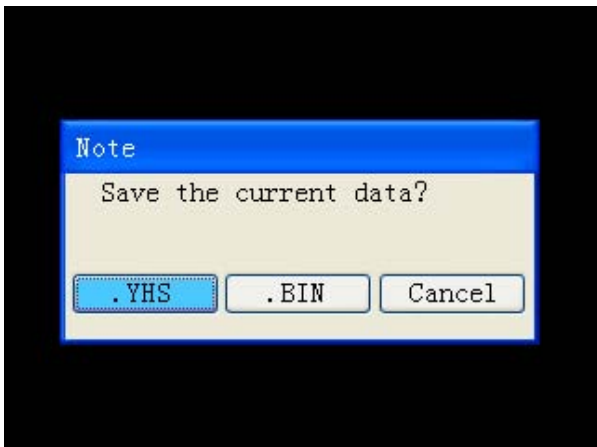


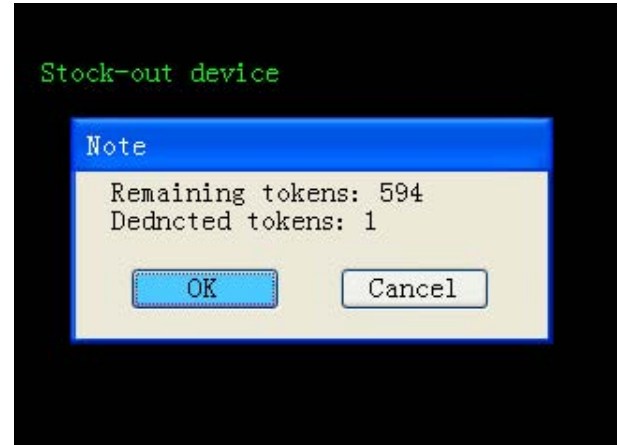
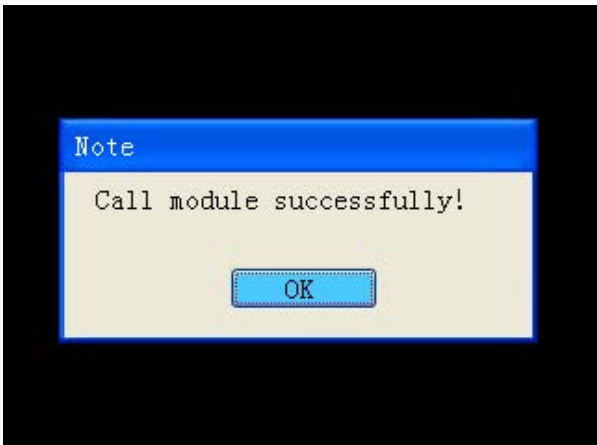




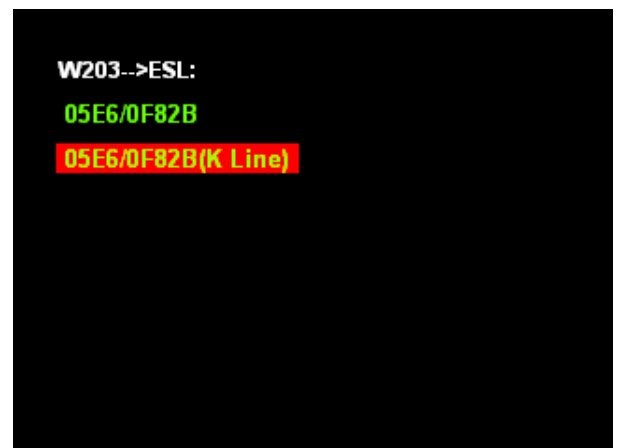
Step2: DME

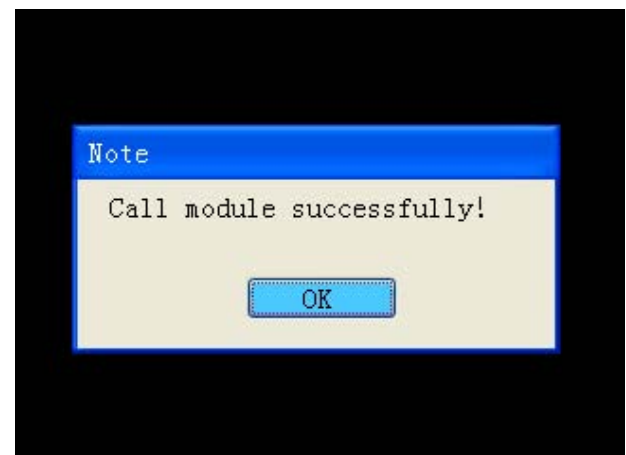
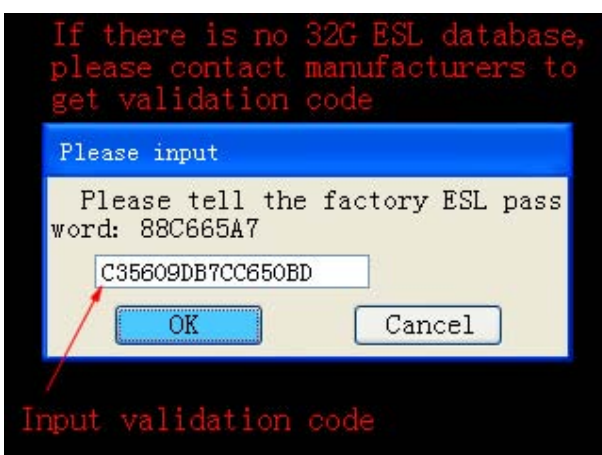
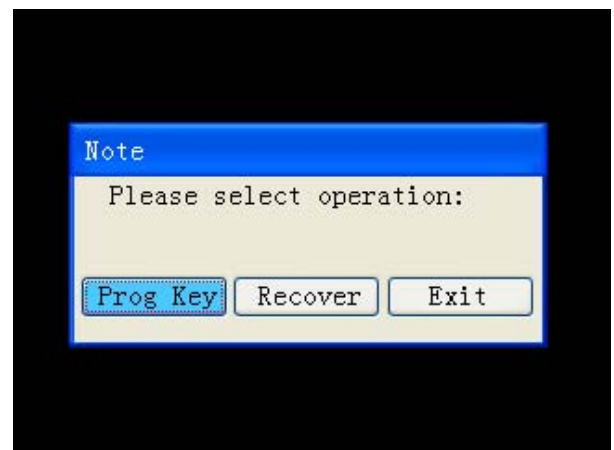
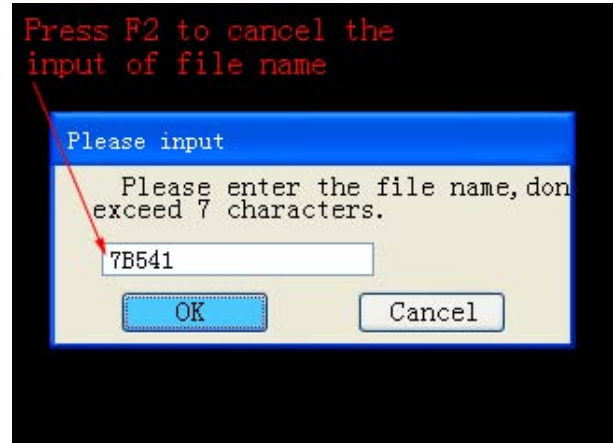
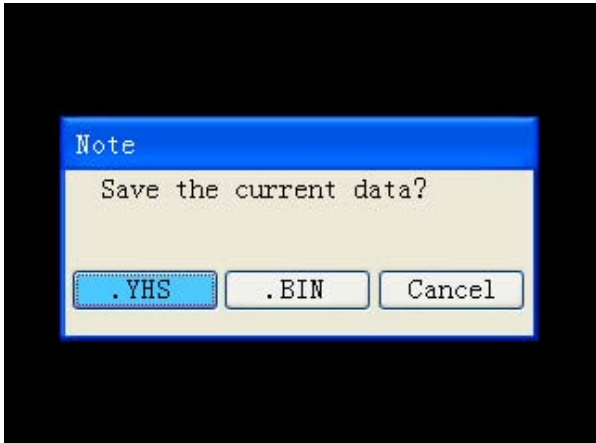


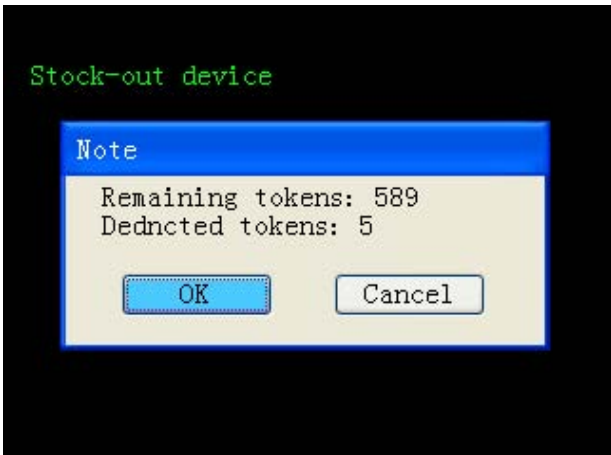




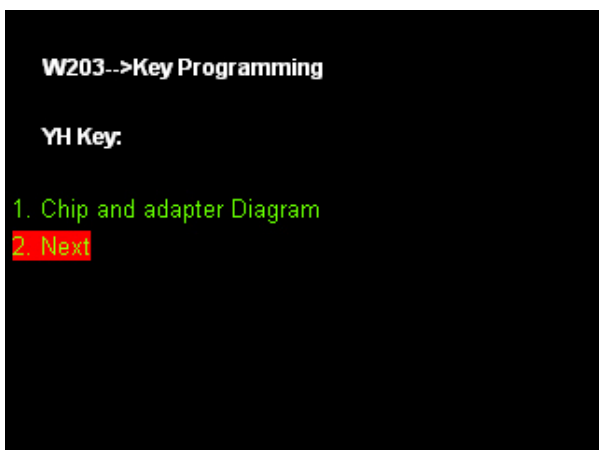
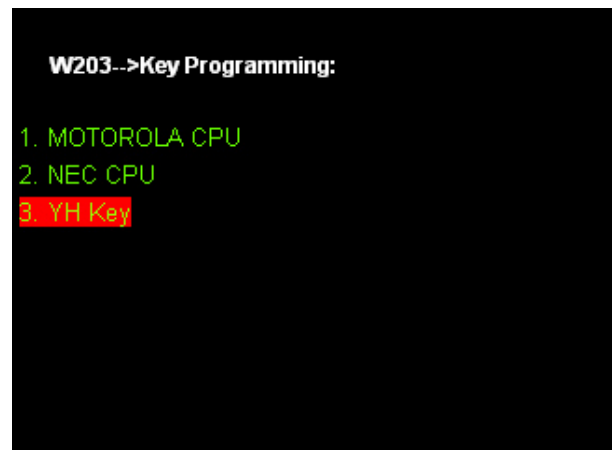
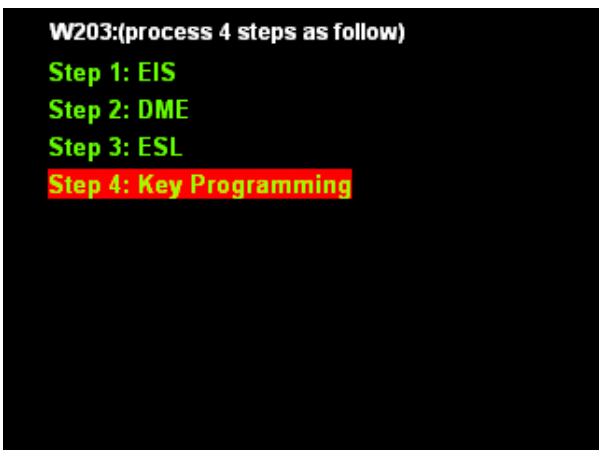
Step3: ESL

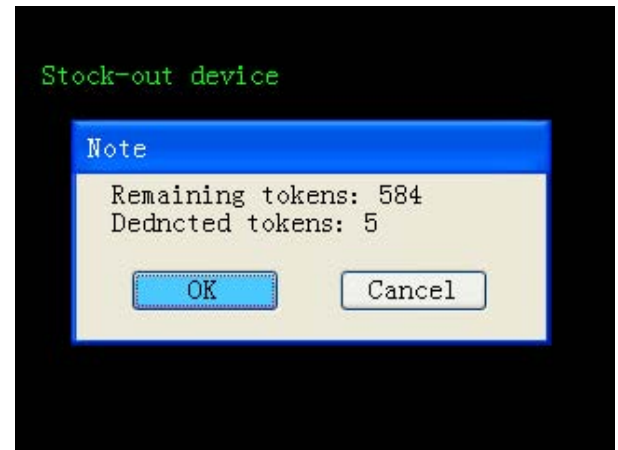
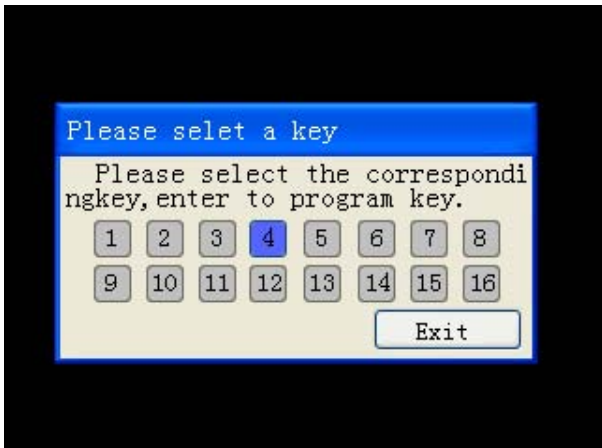




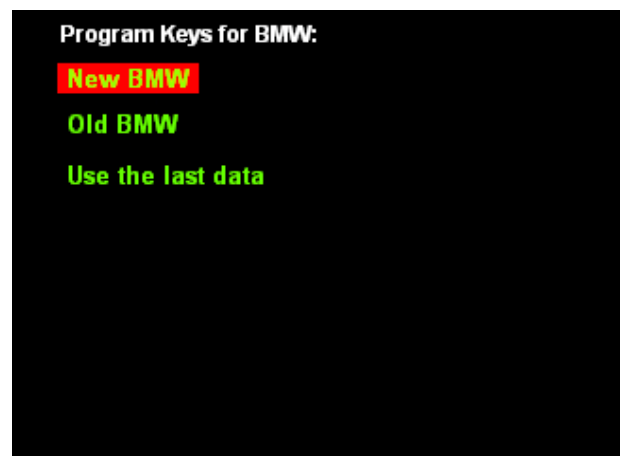
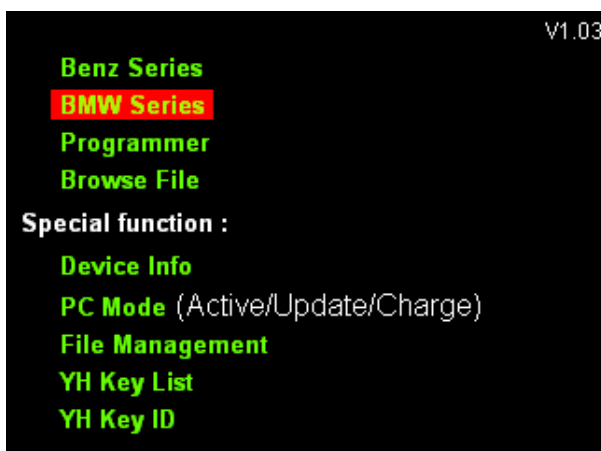


Step4: Key programming





2.BMW series(such as:X5)



Program Keys for BMW:

New BMW

Old BMW

Use the last data

Note: The amount of tokens is different depending on the car model and the function model.

New BMW-->9S12 Adapter:

CAS1

CAS2

New BMW-->9S12 Adapter-->>CAS2:

X5(E70) 9S12DG256

1 Series White shell 9S12DG256

1 Series Black shell 9S12DG256

3 Series White shell 9S12DG256

3 Series Black shell 9S12DG256

5 Series White shell 9S12DG256

5 Series Black shell 9S12DG256

6 Series White shell 9S12DG256

6 Series Black shell 9S12DG256

Step1: CAS Reading

**New BMW-->9S12 Adapter-->CAS2-->X5(E70)
9S12DG256**

Note: Please connect correctly referring to the Operation Diagram before operation.

CAS Location Diagram

CAS Operation Diagram

Key Adapter Diagram

Step 1: CAS Reading

Step 2: Key Programming

Step 3: CAS Programming

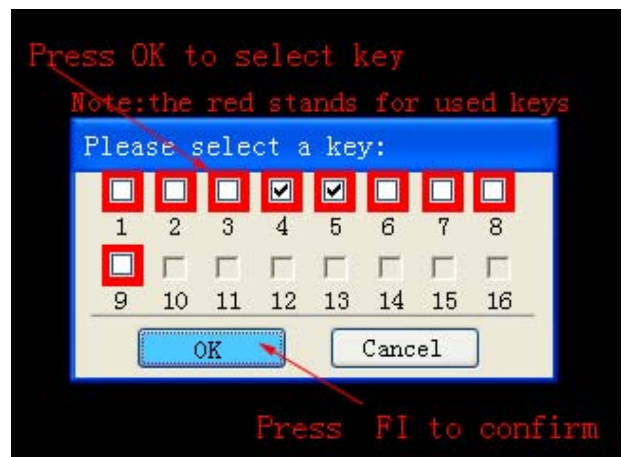
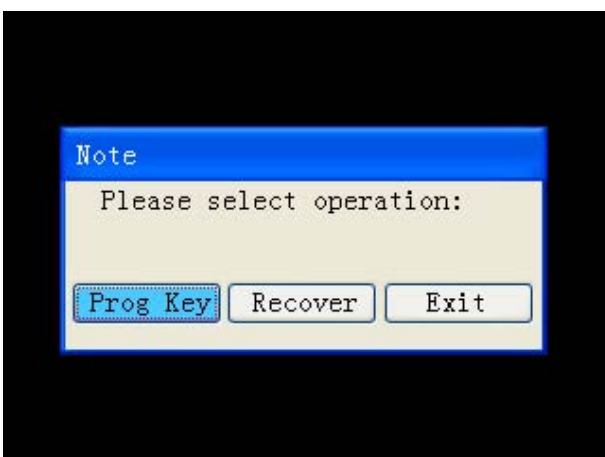
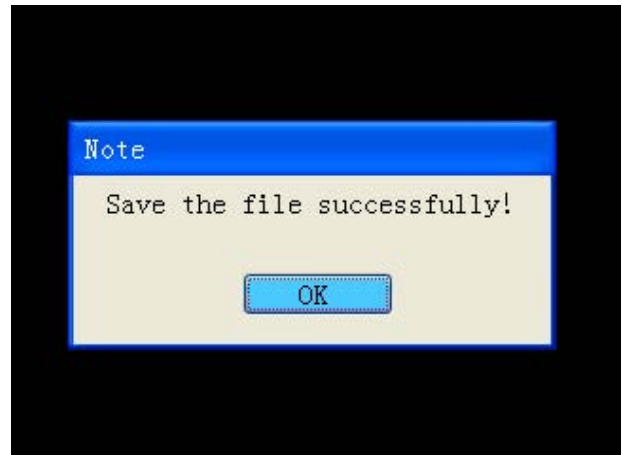
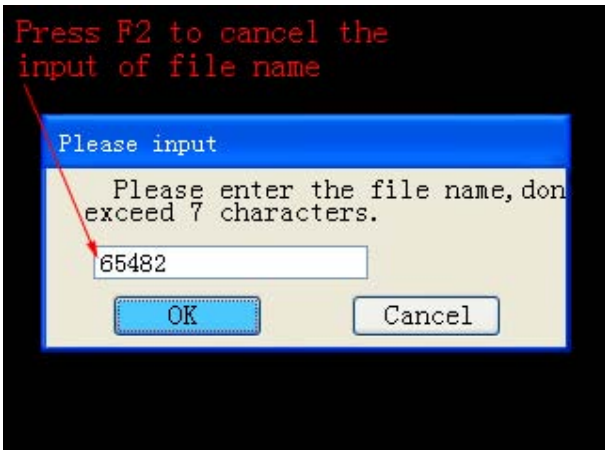
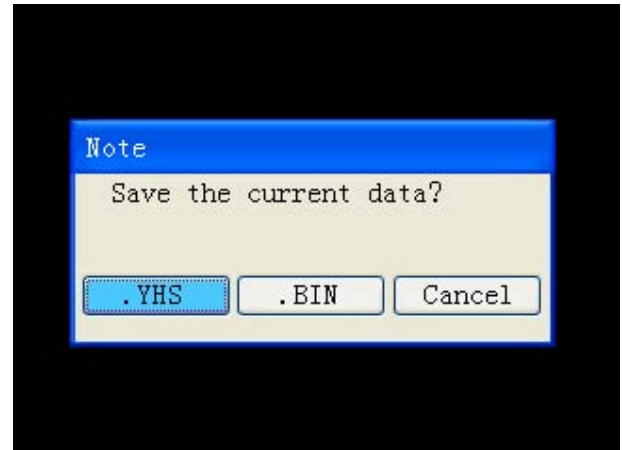
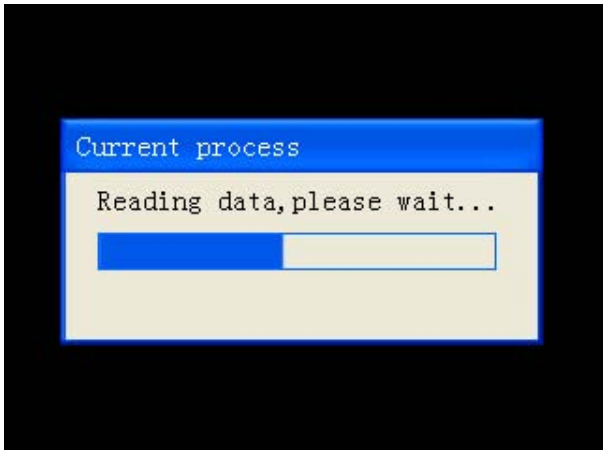
```
Program ID: B001      Stock-ont device
Version: 0001
Protocol ID: 0101
```

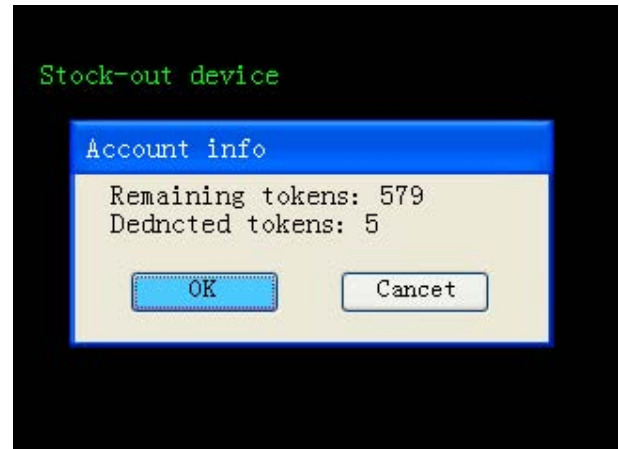
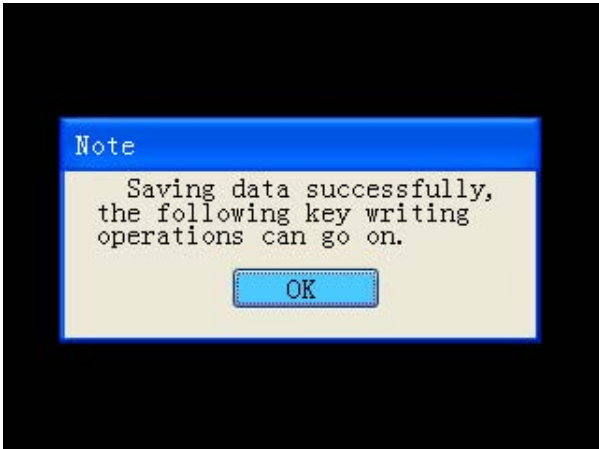
Account info

Remaining tokens: 584
Tokens will be deducted: 5
If continue, do not power off.

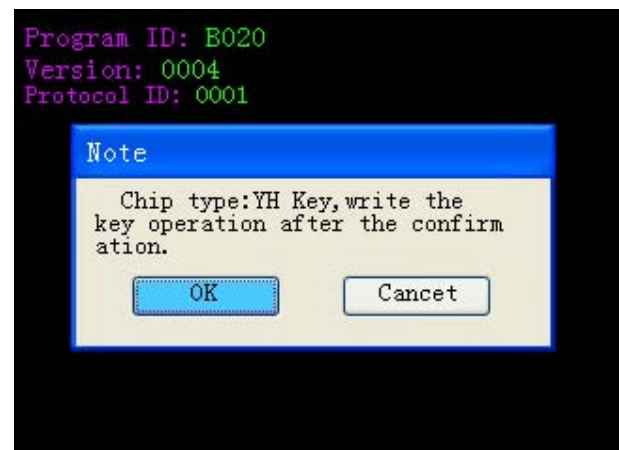
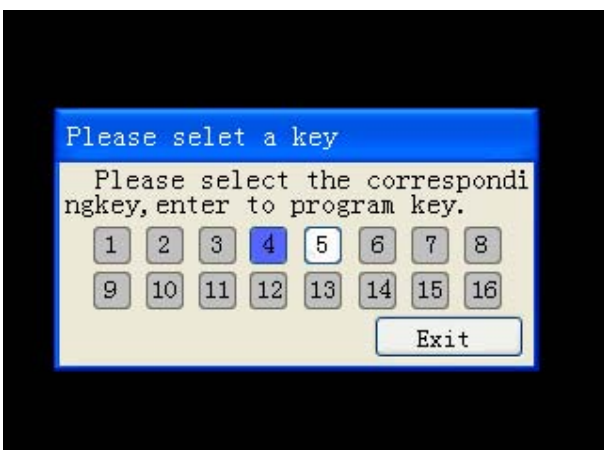
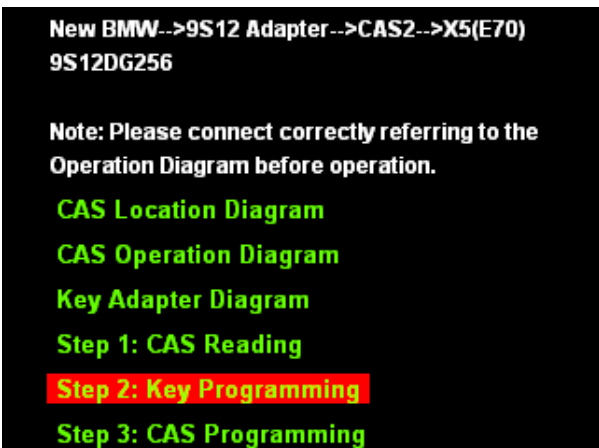
OK

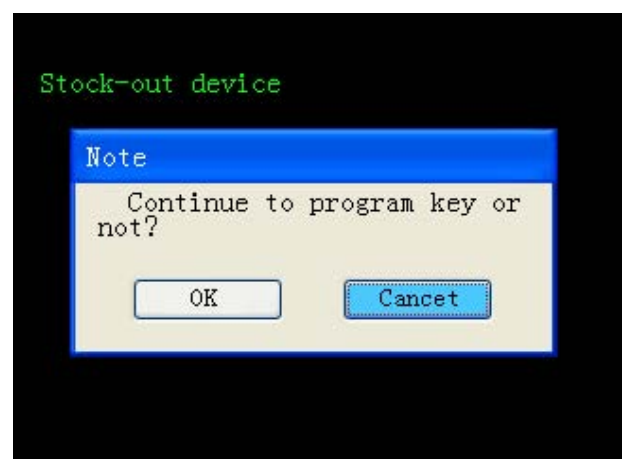
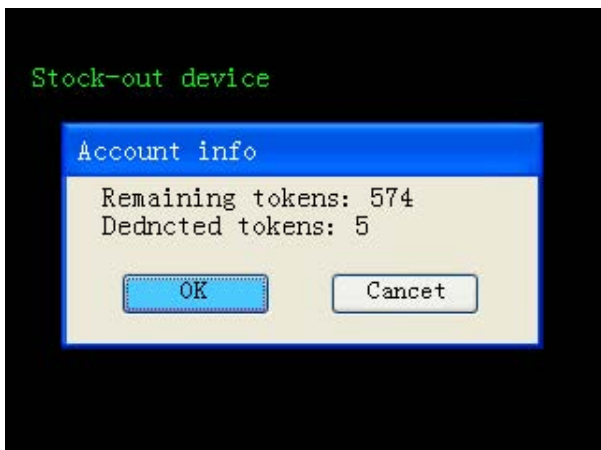
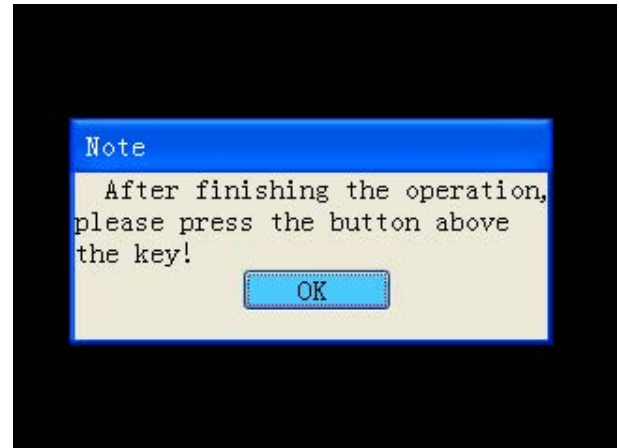
Cancel



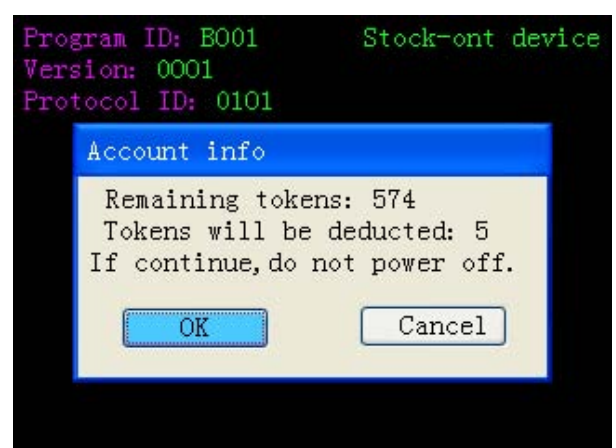
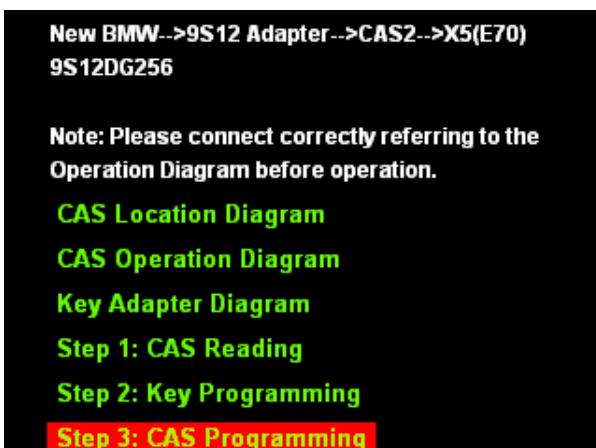


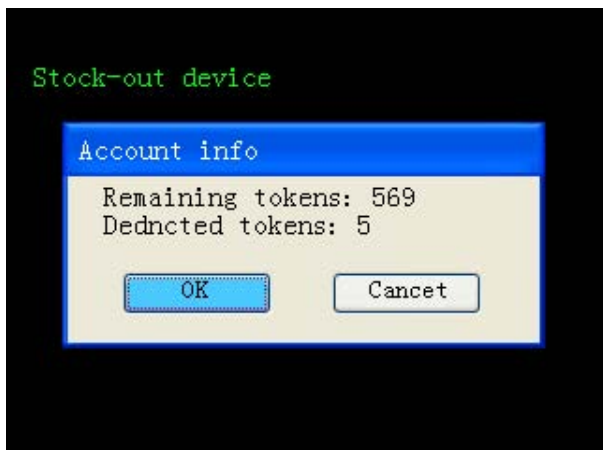
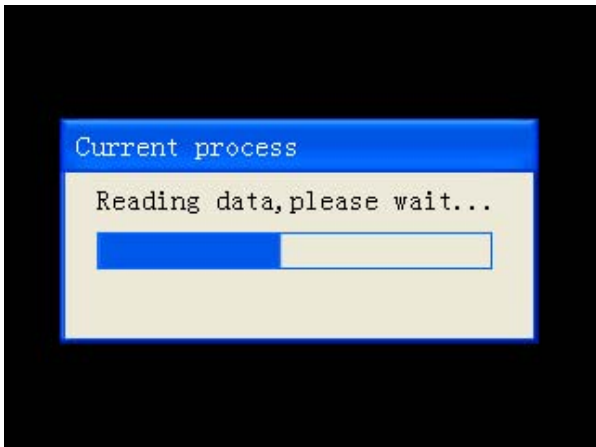
Step2: key Programming





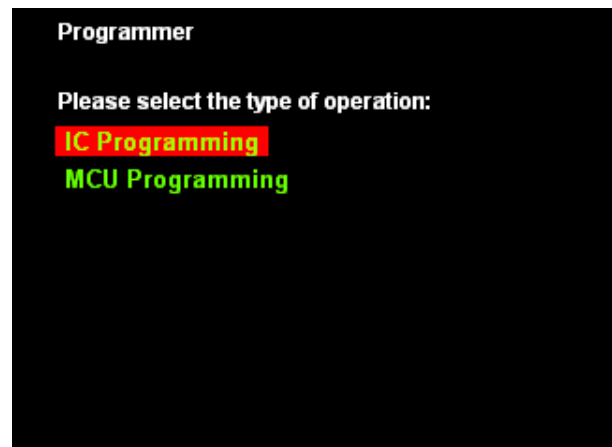
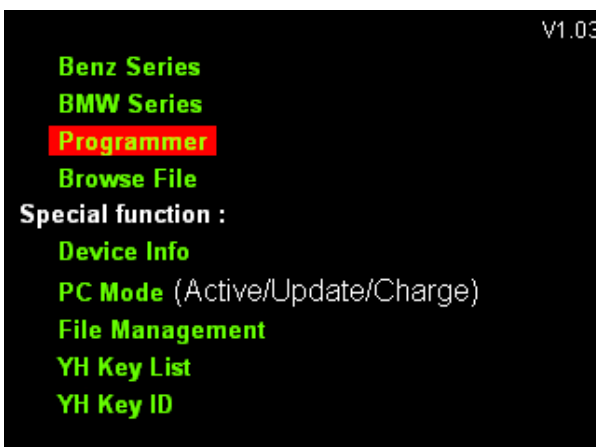
Step3: CAS Programming

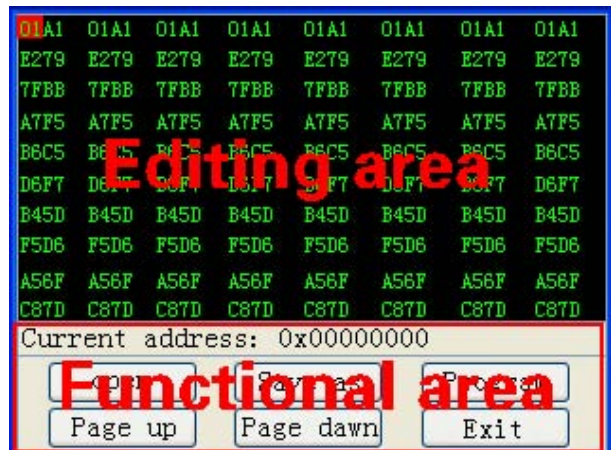
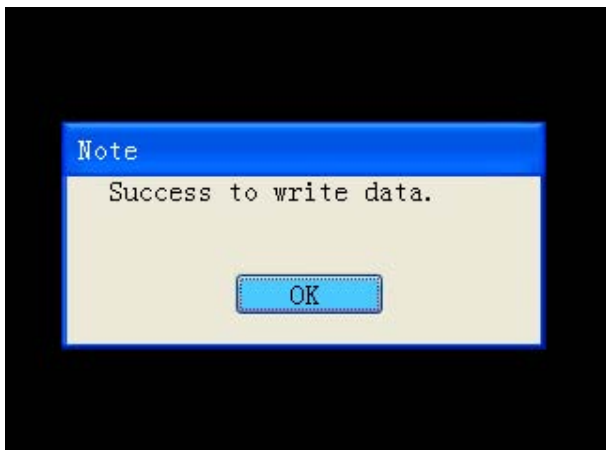
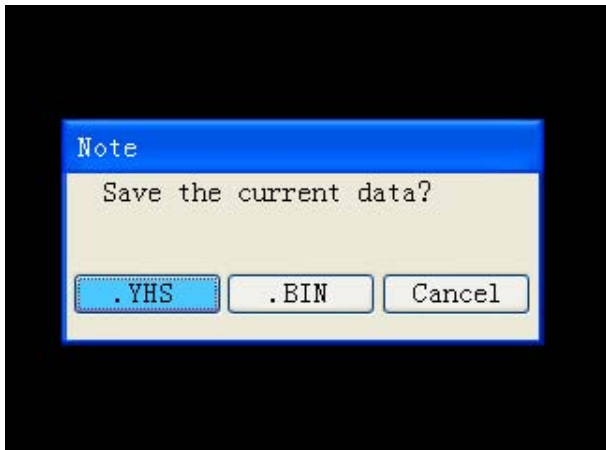
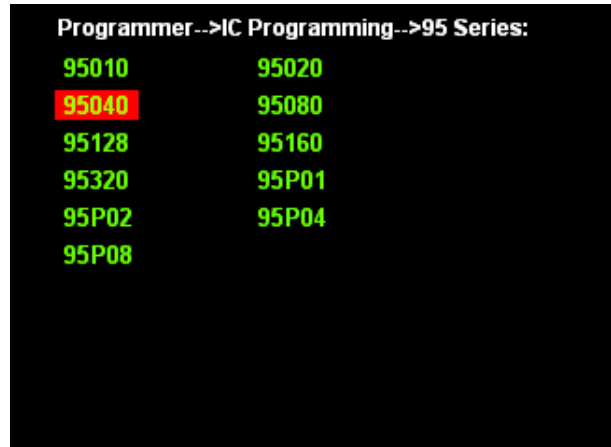


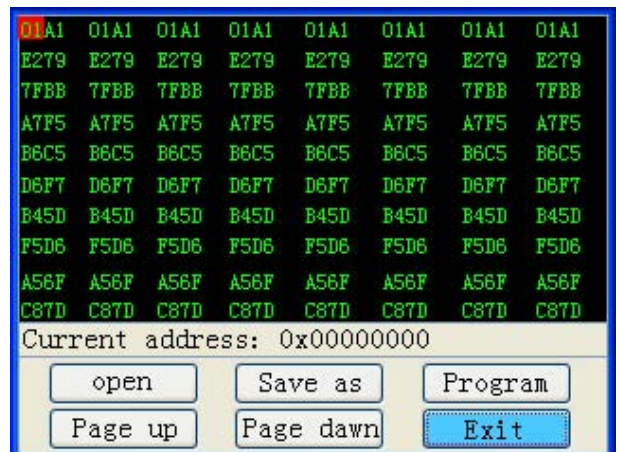
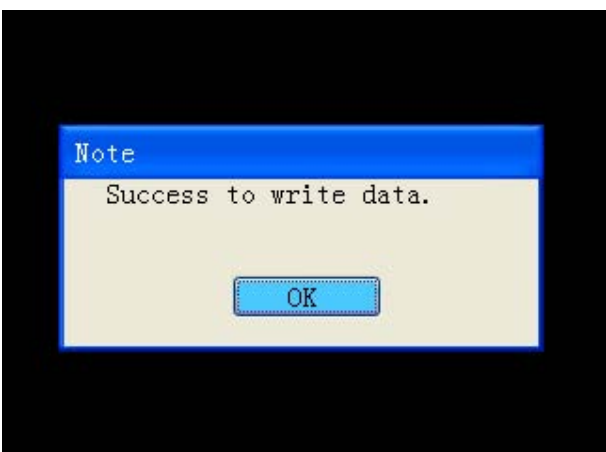
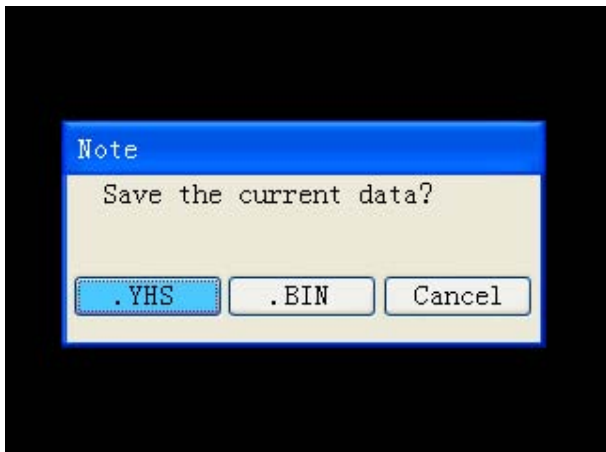
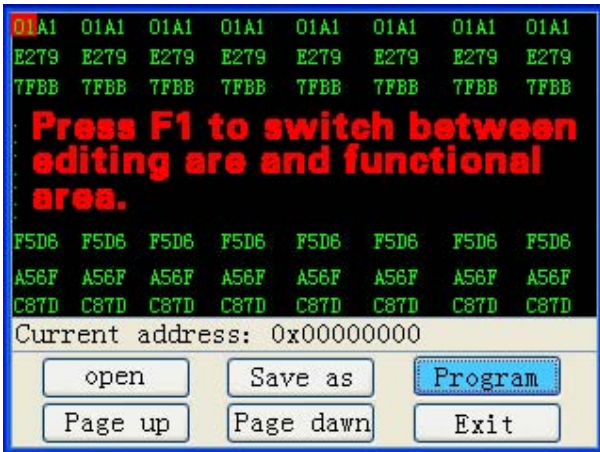


3. Programmer

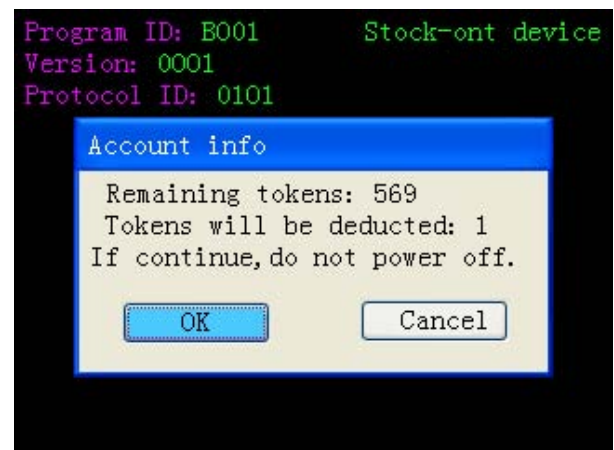
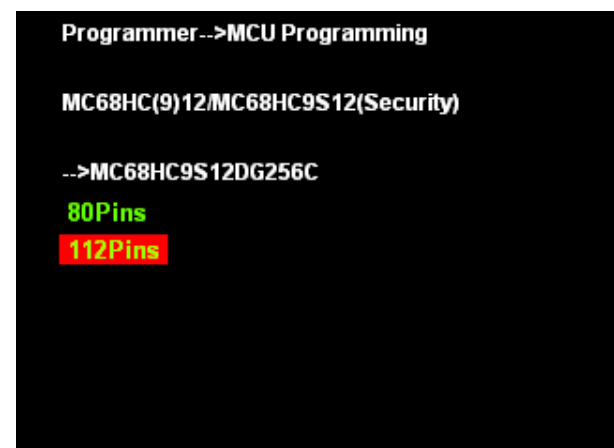
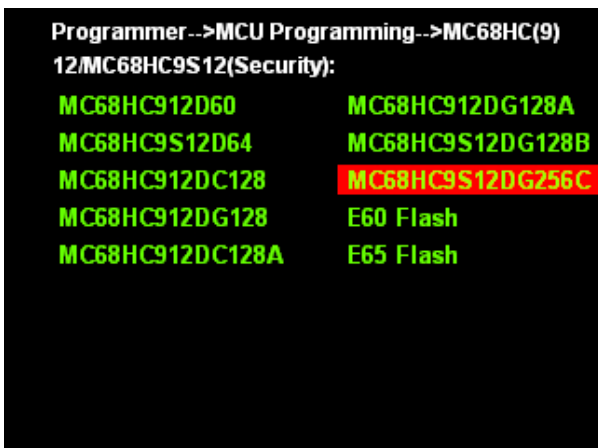
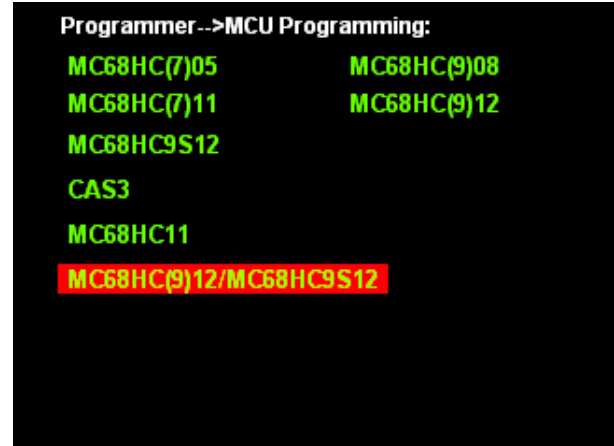
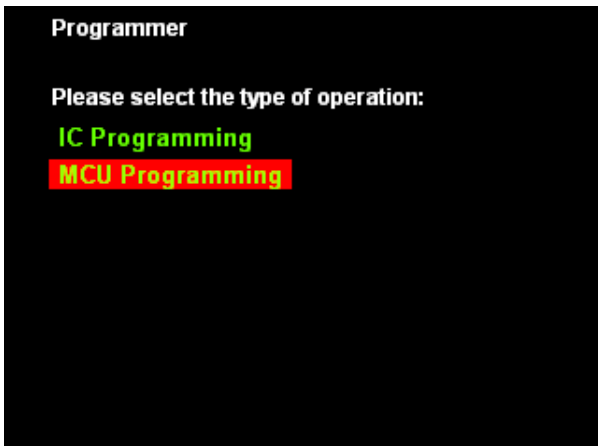
3.1 IC Programming

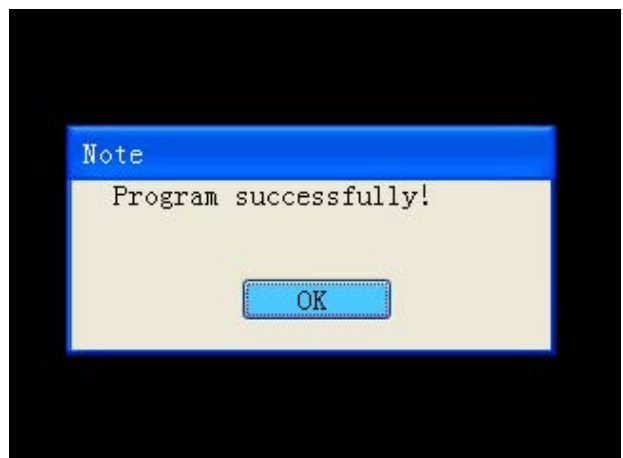
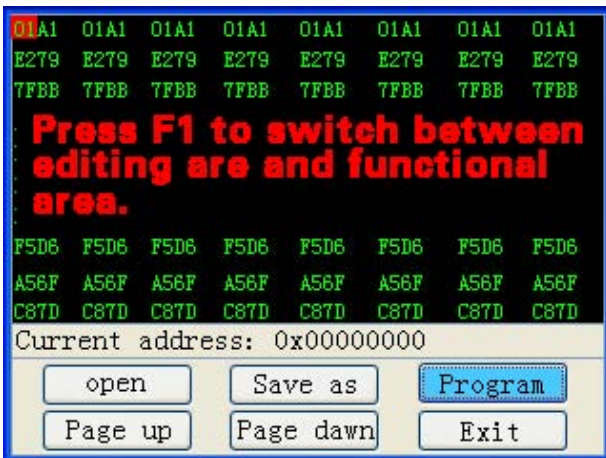
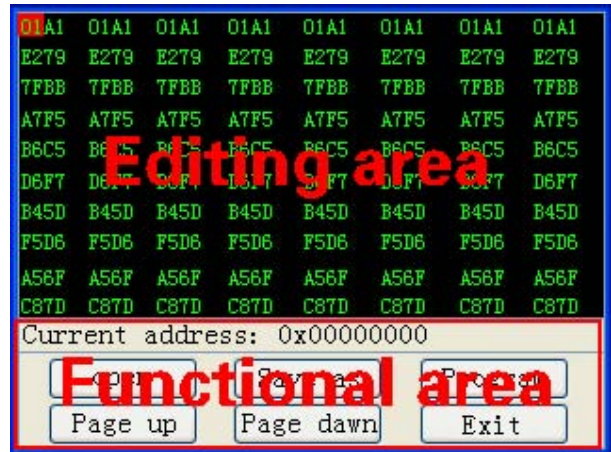
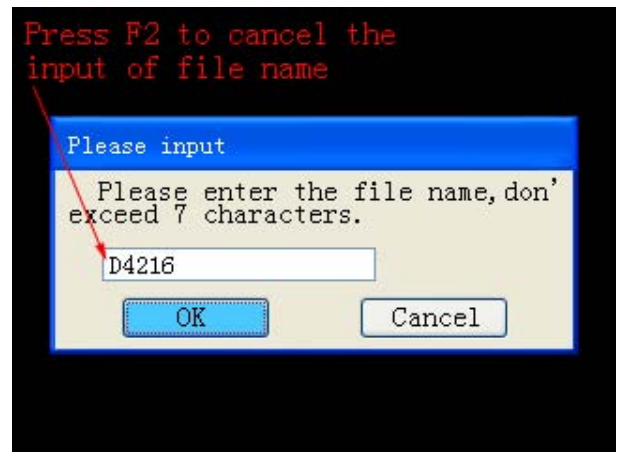
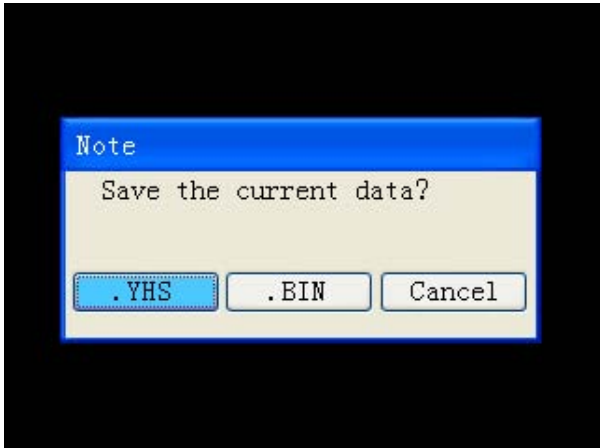


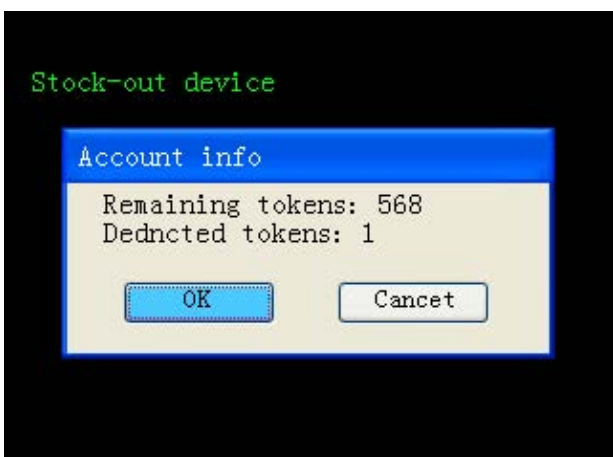
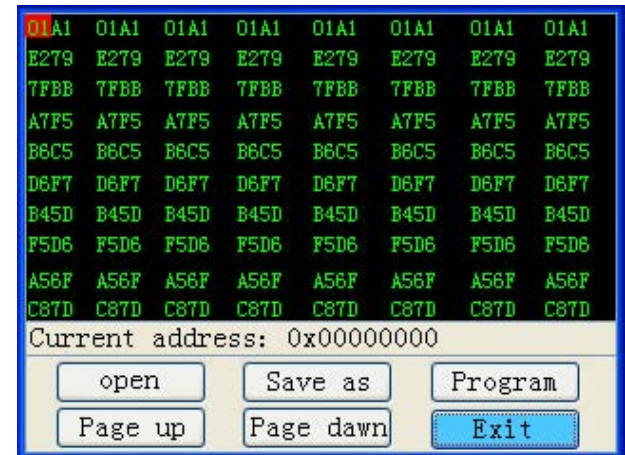
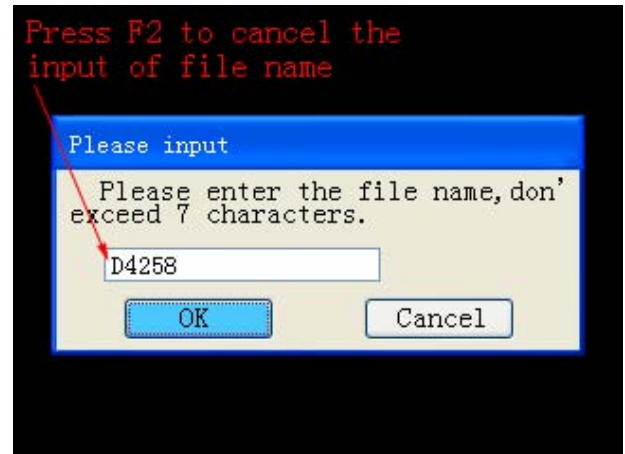
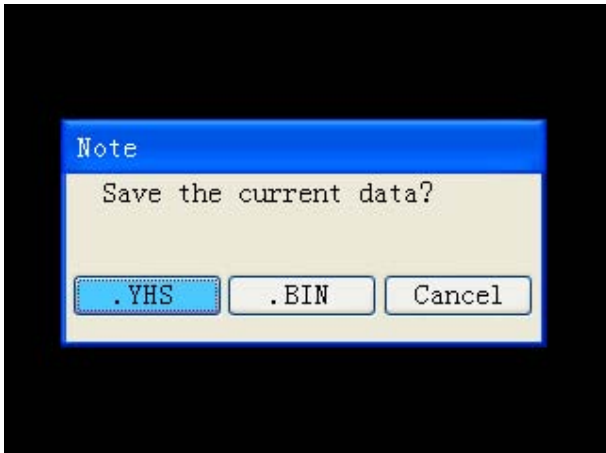




3.2 MCU Programming







VII Appendix

Appendix 1: The Ways of Identifying the Pin Order

1. If the chip has nick, pin 1 is on the bottom left corner, and the number of Pins in Count-clockwise direction are 1, 2, 3, 4, 5, 6, 7, and 8.
2. If the chip has no nick, but "●", pin 1 is close to "●", and the identification of the others' number is the same as above.
3. If the chip has text only, from the text positive, pin 1 is on the bottom left corner, the identification of the others' number is the same as above.



**Chip 93C56
outline diagram**

Appendix 2: Chip Dismantling and soldering

- 1) The choice of iron:

It should be connected with ground safely. When there is no constant temperature soldering iron, the 20W internal heat-type or 25W external heat-type soldering iron can be OK, but ensure that the former should not exceed 25W, and the latter does not exceed 30W.

- 2) The choice of flux:



Rosin is the best choice. Solder paste will never be allowed to use in soldering. You should change the rosin immediately when it turns to black.

3) The choice of solder wire:

The imported solder wire with low melting point and rosin is the only choice.

2. Chip disassembling

1) When unsoldering biserial & straight inserted chip, you can clean out the soldering tin on the pin by disordering gun or disordering wire, please don't draw hard.

2) When unsoldering patch or chip, melting more rosin on the two rows of pins, and heat them up until the chip loose completely, then remove it. Please don't pry hard.

3) Please do not heat the chip too long, or it will be damaged.

4) If there is protection paint on the chip, please heat it up with iron, and scratch gently with a blade or tweezers, then dismantle the chip.

5) How to wipe off the protection paint on the circuit board or IC?

Before soldering, please heat the layer of protection paint with iron or hot air to 70-80 degrees Celsius, and then peel gently with a word screwdriver.

3. Chip Soldering

1) Please do not heat the chip too long, or it will be damaged.



- 2) The iron should be wiped with a damp cloth or soaking sponge to keep it clean ,because it won't be easy to disordering tin in a state of high-temperature oxidation for a long time.
- 3) The heat conduction should depend on the tin, and it does no good to soldering by the iron head-to-chip hard.
- 4) Don't move or shake the chip before the soldering solidified.
- 5) When soldering, you had better first solder the diagonally pins to fasten the chip, and then do other pins.

Thank you!

Any query, please kindly contact with us !

Add : No. I room, 15Fl, International Chamber of Commercial Tower, No 59 Jinhu Road,
Nanning, Guangxi, China Post No. : 530021
Tel : 86 -771-5842456 5846955 Fax : 86-771-5846955 Email: sales@autoemaster.com
Web: <http://www.carkeytool.com>